

Dubious claims of “*surface connections to liquid magma*” at the Revell Batholith and associated “*giant orbs that oscillate generating energy fields*”.

Comments on IAAC’s Draft Integrated Tailored Impact Statement Guidelines, ref. #166000E

Jaro Franta, 26 April 2026

Thanks to the Impact Assessment Agency of Canada and the Canadian Nuclear Safety Commission for inviting comments on the Draft Integrated Tailored Impact Statement Guidelines for the Deep Geological Repository for Canada’s Used Nuclear Fuel Project, proposed by the Nuclear Waste Management Organization (the NWMO).

On April 10 IAAC published their **Draft Integrated Tailored Impact Statement Guidelines** for the Deep Geological Repository for Canada’s Used Nuclear Fuel Project

<https://iaac-aeic.gc.ca/050/documents/p88774/166000E.pdf>

Since then, several comments have been submitted to the IAAC registry.

Among them is registry submission **Reference Number 764**, authored by Paul Filteau. It appears to be the third submission by the same author.

The author's comments read like some quaint tale out of the 1960s and 70s counterculture, focused on lunar spirituality.

The popular term **Moonchild** was popularized in the 1960s, often associated with the song "*Moonchild*" by King Crimson, an English rock band formed in London in 1968.

It was used to describe dreamy, ethereal, or sensitive people who felt a cosmic connection to the moon.

That's all well and good, but things go very much off the rails when Filteau drifts into what he seems to think is actual geology of the Revell batholith, the proposed site of NWMO's DGR project:

Filteau writes that "*Plutons, like those in Revell Township are surface connections to liquid magma. Within this magma are two giant orbs that oscillate generating energy fields.*"

The screenshot shows a web browser window with the address bar containing the URL: iaac-aeic.gc.ca/050/evaluations/proj/88774/contributions/id/66432. The page title is "archaeological and spiritual questions concerning the proposed DGR". Below the title, it says "Reference Number 764" and "Text". The main text of the document is visible, with a yellow highlight over the following sentence: "Plutons, like those in Revell Township are surface connections to liquid magma. Within this magma are two giant orbs that oscillate generating energy fields." The rest of the text continues: "In former times people would lie on their backs to connect with this energy and outer space. Along with radiation contaminating water, several kilometres of underground tunnels and caverns filled with nuclear waste will destroy the connection between the energy from inner earth and our ability to connect with it and the heavens. Besides eternally contaminating water, what are the implications of breaking this spiritual bond? Now that Trinity (first nuclear bomb) has happened it can't be contained in an underground box." At the bottom, it says "Submitted by Paul Filteau".

Ignoring the “*giant orbs that oscillate generating energy fields*” for the moment, **the geology of the Revell batholith has in fact never had anything to do with any “*surface connection to liquid magma*”.**

The Revell batholith is known to have formed about 2.7 BILLION years ago, by liquid magma **intruding into Greenstone that was already in place since over another billion years earlier.**

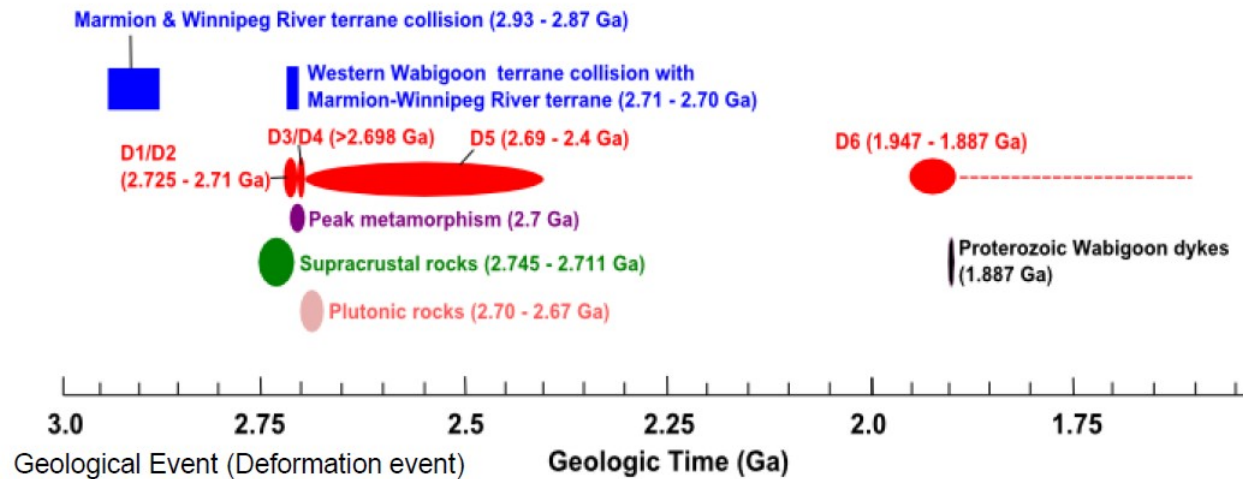


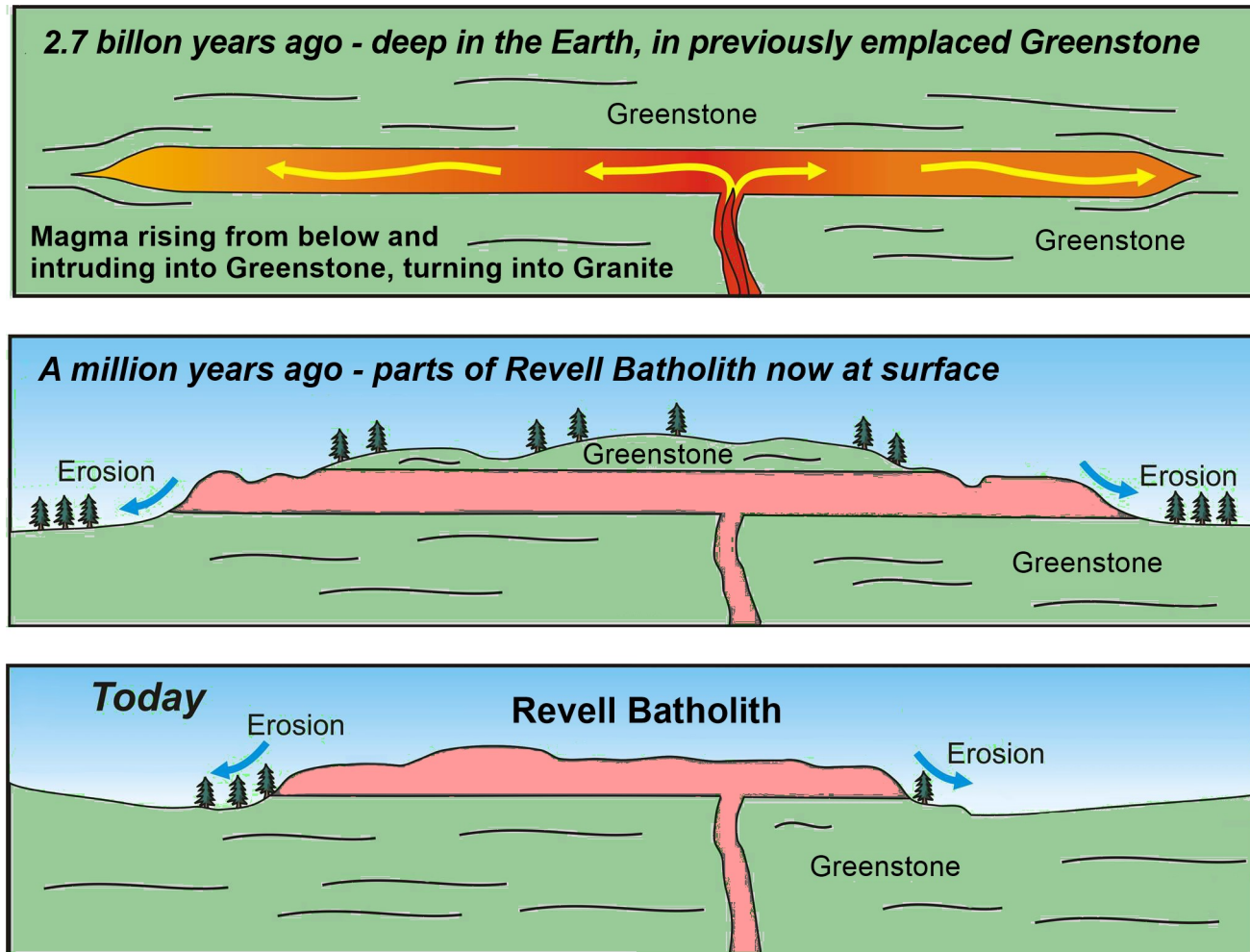
Figure 5: Summary of Archean and Proterozoic geological events for the Revell Regional Area.

That intrusion of liquid magma never reached the surface: It occurred several kilometers BELOW THE SURFACE of the existing Greenstone, which itself was at the base of a shallow sea.

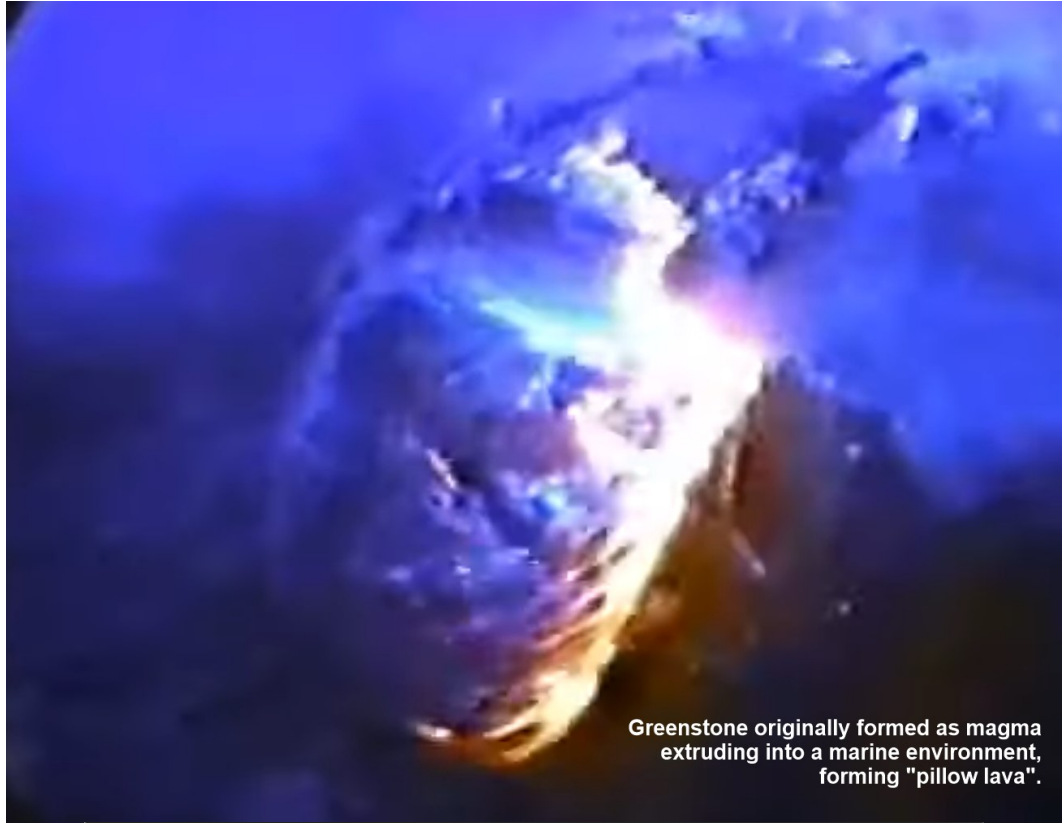
If the intrusion of liquid magma had not stopped deep below surface, it simply would not have become granite.

Greenstone on the other hand, forms by direct contact of liquid magma with seawater, solidifying as the well-known “pillow lava”, eventually building up over millions of years to a thickness of several kilometers, thus providing the medium in which granite batholiths form many millions of years later.

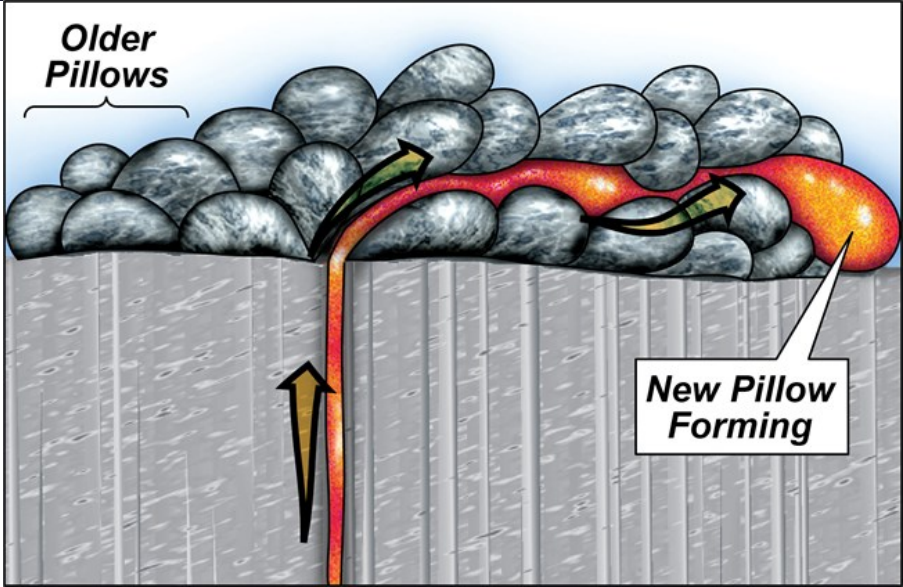
Fast-forward a couple billion years, and the thick layer of Greenstone is eroded away, exposing the top surface of the long-buried granite batholith.



Of course any “connections to liquid magma” have long since solidified, and they never reached to the surface anyway, in the case of the batholith.



Greenstone originally formed as magma extruding into a marine environment, forming "pillow lava".



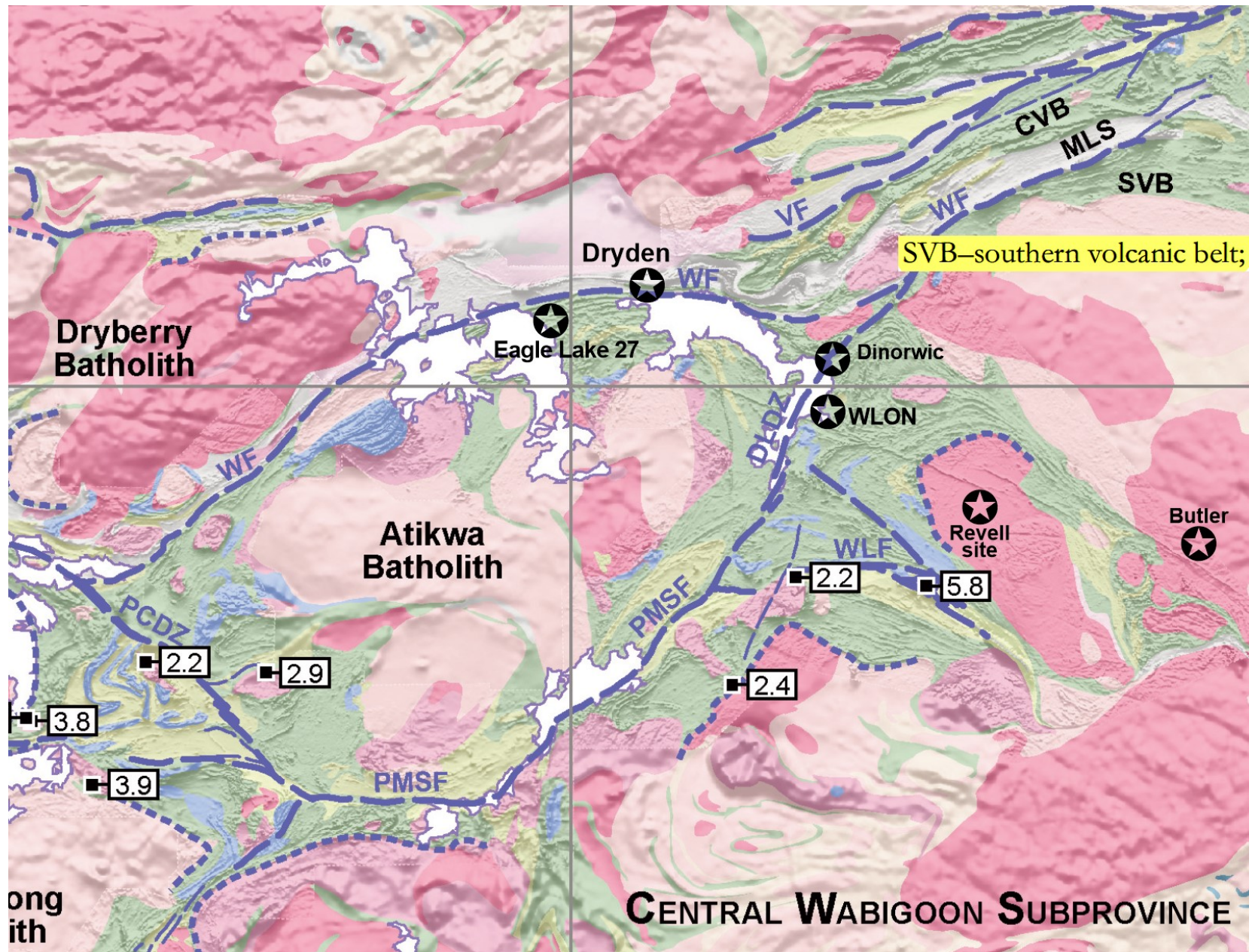


Greenstone, showing characteristic pillow lava geometry, resulting from extrusion of lava into a marine environment.

Perhaps Filteau is confusing Greenstone with the granite batholith, as the former did indeed have “connections to liquid magma” billions of years ago.

Maybe he should seek those “energy fields” in the Rayleigh Greenstone Belt, just north and east of the Revell Batholith.

It’s also where the mines and quarries are, along with the greenstone belts to the south and west.



Highway 17 sits largely on the Rayleigh Greenstone Belt, so perhaps driving up & down between Ignace and Dryden will give Filteau the energy he seeks?

Besides that, one has to wonder where Filteau was all these years, when various **mines and rock quarries** operated in the region, along with extensive forest logging.

Archeological research in the area doesn't seem impressive, for any of those commercial ventures.



Explore site history b

(Re: Dig Resulted In Indignity . . . — CJ, Oct. 18)

IT IS time to ask about archeological reconnaissance of the proposed site of a deep geological repository, west of Ignace. Considerable damage was done by bulldozing roads and drill locations on the site east of the Wabigoon Lake Ojibway Nation.

Paul Filteau
THUNDER BAY



REAPED FOR PROFIT

"Hodgson Ontario"



DISRUPTIVE VIEWS

"Hodgson Ontario"



BUT WHERE WERE YOU

"Hodgson Ontario"