



CANWHITE SANDS CORP.  
Suite 1930, 440-2<sup>nd</sup> Ave SW  
Calgary, Alberta  
T2P 5E9

**ELECTRONIC MAIL**

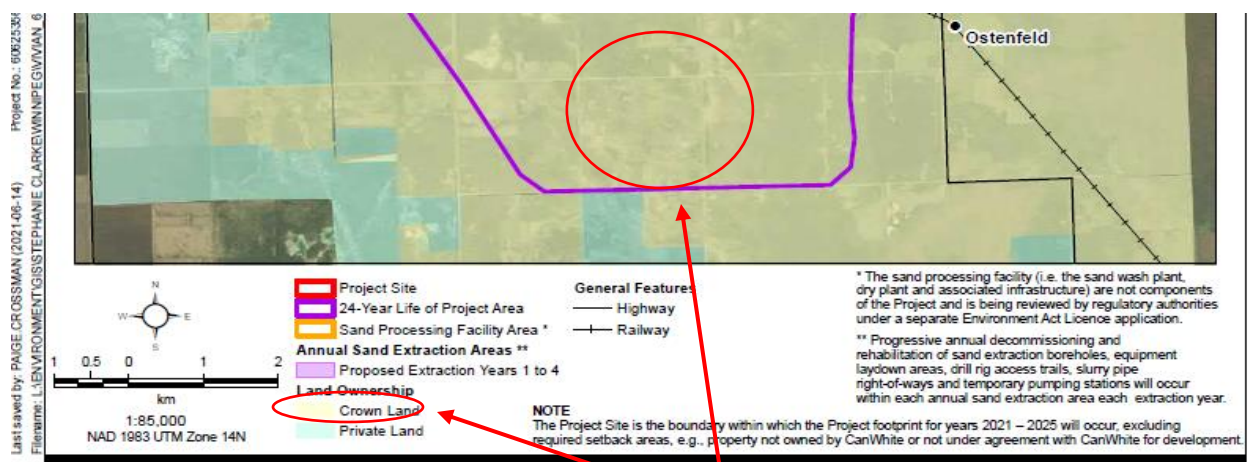
October 26, 2021

Impact Assessment Agency of Canada  
Prairie and Northern Region/Région des Prairies et du Nord  
Canada Place  
Suite 1145, 9700 Jasper Avenue  
Edmonton, Alberta T5J 4C3

**RE: CanWhite Sands Corp response to IAAC letter of clarification on Crown Land**

CanWhite Sands Corporation (CWS) respectfully submits a clarification on the planned activities on Crown Land. Due to an incorrect map labelling (Figure 1-1 of the Extract Project Environment Act Proposal) that was previously submitted to the province, assumptions have been made that CWS will be operating on Crown land.

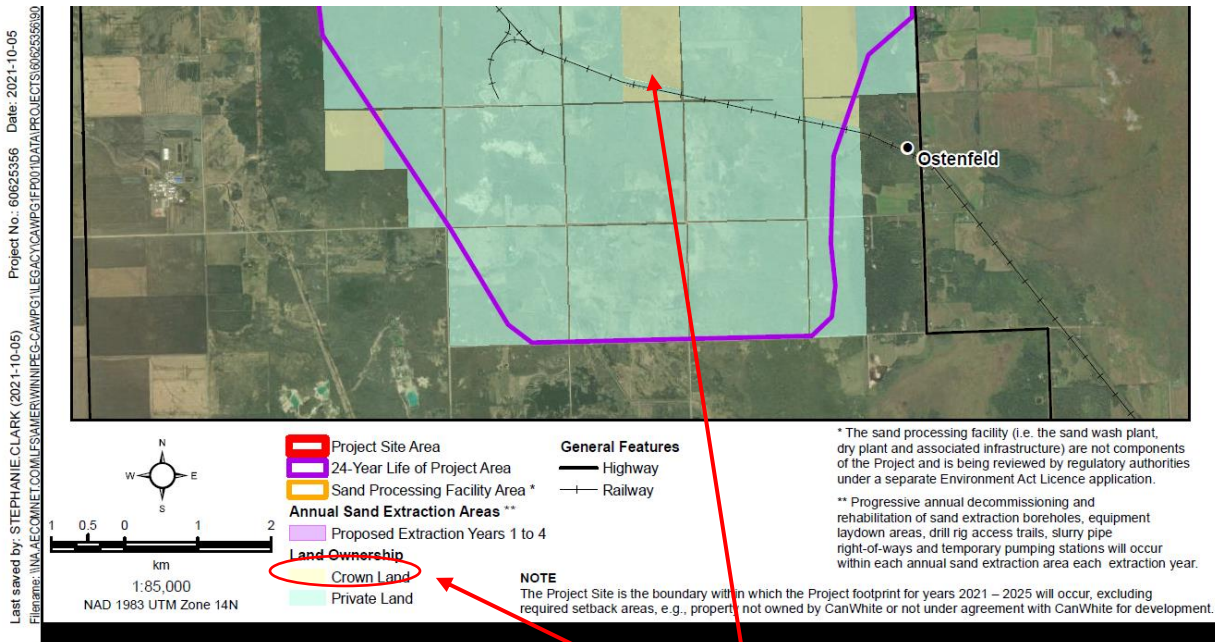
The incorrect map was filed with the Environment Act Proposal for the Extraction project. The map was incorrectly labelled in the legend as **Crown Land** in yellow, when the parcels marked are actually **Crown Mineral Rights (Appendix A)**. CWS corrected this map as soon as the error was discovered. However, due to no data being available as to where crown surface rights vs crown land is in the area, CWS had to go through each parcel manually, request landownership details from the province and generate a new map.



Vivian Sand Extraction Project  
Project Site Location and Land Ownership  
CanWhite Sands Corp.

Incorrect labelling.  
These are Crown  
Mineral Rights

On October 5, 2021 CWS submitted the corrected map showing the correct Crown Land as seen in Appendix B and filed on the Provincial Public Registry. It is important to note that **CWS has no activities on any Crown Land, nor does CWS plan to have any activities on Crown Land throughout the entire life of the project** as is stated in the previous letter. Therefore, CWS is not subject to any Section 35 Consultation.



Vivian Sand Extraction Project  
 Project Site Location and Land Ownership  
 CanWhite Sands Corp.

Corrected – This is Crown Land

**AECOM**  
 Figure: 1-1

Additionally, please note that the map contains the first four years of the operations, which is the timeline for the filed EAP and not the 24 year life. However, the 24 year mine life is included for information purposes and as stated in Section 1.7.1 of the EAP, subsequent Notice of Alternations will be filed with the Province in four year increments. The 24 year mine life map does encompass some Crown Lands however within the larger 24 year mine life no activities on Crown Land are planned at any time during the life of the entire project. CWS will be operating exclusively on Private Lands.

In addition to other community and public engagement, CanWhite has met with several Indigenous groups to discuss the project. These meetings are private and details of these meetings are not for public unless released by groups involved directly.

Best Regards,

<Original signed by>

Brent Bullen, MBA  
 Chief Operating Officer  
 CanWhite Sands Corp.

**cc:**

Jennifer Winsor P. Eng. (Manitoba Conservation and Climate, Environmental Approvals)

**Attachments:**

- Appendix A – Incorrect Map
- Appendix B – Corrected Map