

**Ring of Fire Regional Assessment Working Group  
Thunder Bay, 24-26 June 2025**



Lake sturgeon  
(Toledo Blade photo)

**Initial scenarios  
for the Ring of  
Fire Regional  
Assessment:  
considerations  
and options**

**RAWG Scenario Development Discussions**

Robert Gibson

Peter Siebenmorgen

# Regional Assessment agenda on scenarios (in Terms of Reference)

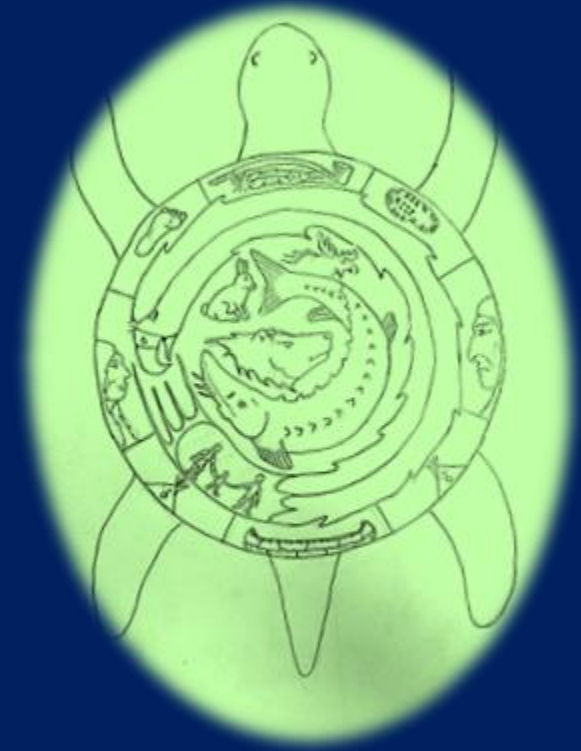
- identify potential development scenarios (not predictions) with different development intensities and timeframes up to 150 years
- identify potential effects
- compare scenarios in light of regional and community priorities
- consider implications for
  - steps to start taking now
  - collaborative regional governance structures to build



RAWG

# What possible future scenarios to develop?

- actual futures not predictable – too many possibilities and influencing factors
- can depict possible futures using existing knowledge and experience elsewhere:
  - 15, 30, 60 years ... to seven generations (beyond mining)
  - no, low, medium, high intensity industrial development
  - also irregular development, boom and bust periods (perhaps most common)
- can't develop scenarios for all these possibilities in much detail
- need to set some priorities



Harry Papah

SCENARIOS under Consideration/ TIMEFRAMES	15 YEARS	30 YEARS	60 YEARS	7 GENERATIONS (150 YRS+)
<p><b>NO Major Mineral Developments</b> (limited if any industrial-scale disturbances, only community-focused activities and projects; null option to be considered within analysis)</p> <p>*Activity/development assumptions to be discussed and considered by RAWG at all time horizons, but especially for projecting longer timescales</p>				
<p><b>LOWER Intensity of Possible Developments</b> (e.g., community road access and a possible mine)</p> <p>*Activity/development assumptions to be discussed and considered by RAWG; example assumes some/limited industrial road use leading to additional access of territory</p>				
<p><b>MID Intensity of Possible Developments</b> (e.g., possible cluster of several mines over decades and associated developments)</p> <p>*Activity/development assumptions to be discussed and considered by RAWG</p>				
<p><b>HIGH Intensity of Possible Developments</b> (e.g., potential for major ‘rush’ of mines and associated developments throughout the region)</p>				

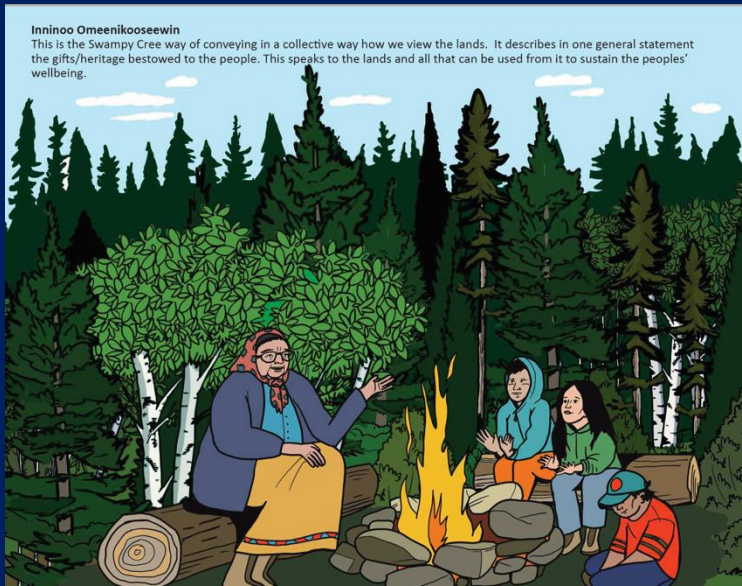
# Where to start?



RoF RA ToR

- could begin with the future for the 7<sup>th</sup> generation
- what future(s) would they want? what are the qualities and characteristics of a desired future for them?
- what positive changes are needed? what must be protected or prevented?
- what can be learned from experience elsewhere

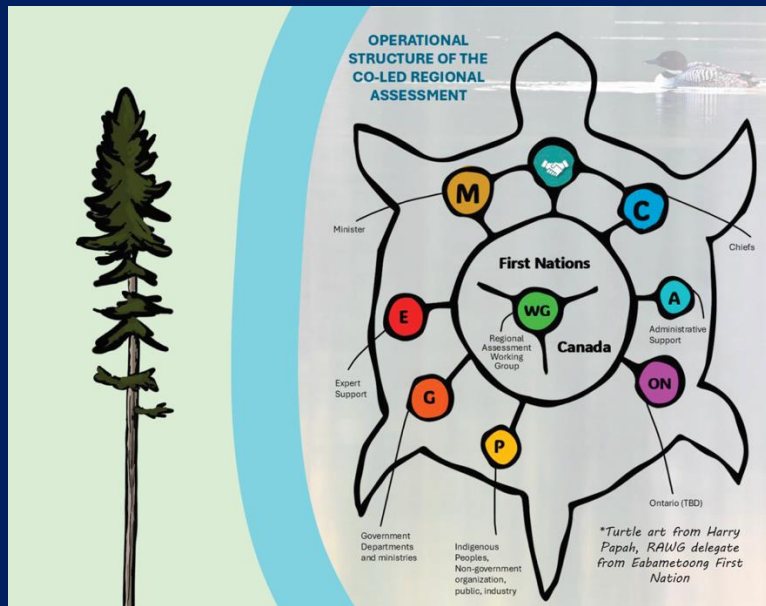
# Then what?



RoF RA ToR

- the future scenario for the 7<sup>th</sup> generation would show what possibilities to encourage, avoid, or adjust
- useful in considering more immediate possible scenarios
- also useful in deciding what shorter term scenarios (how soon, how much development intensity, what kinds of development projects) to build first and with what level of detail

# 7<sup>th</sup> generation scenario implications for earlier scenarios



RoF RA ToR

one example:

- 7<sup>th</sup> generation scenario is likely to anticipate livelihoods not dependent on mining
- earlier scenarios should begin early to build a diversity of non-mining foundations for livelihoods and community wellbeing
- and could inform discussion of how collaborative decision making in the region should be developed to guide these steps

# Regional Assessment priorities for considering future scenarios (also in ToR)

- To be well together (Community wellbeing)
- Cultural and spiritual wellbeing
- Social and Economic Equity
- Healthy Environment Relationships

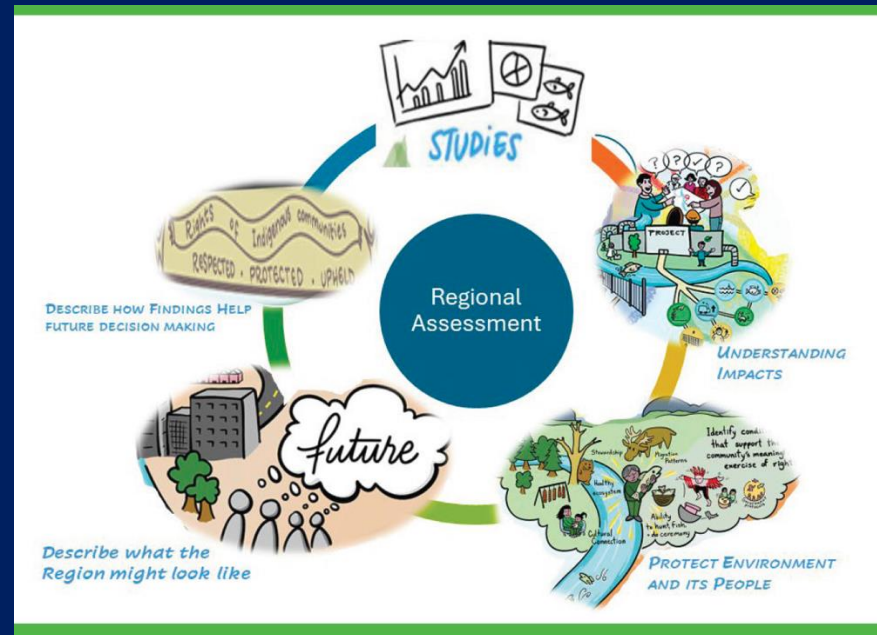


RAWG

Harry Papah

# Community and regional priorities, including for the 7th generation's future

- the four central priorities (earlier slide)
- findings from the community studies, including on priorities
- opportunities and concerns arising from studies of possible regional activities and cumulative effects
- lessons from experience elsewhere

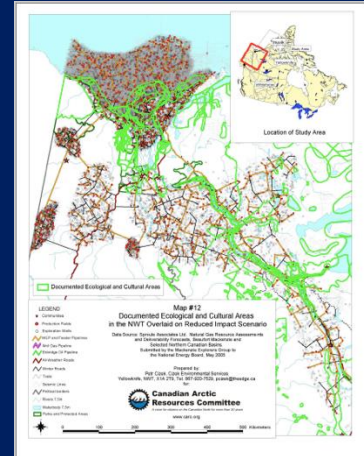
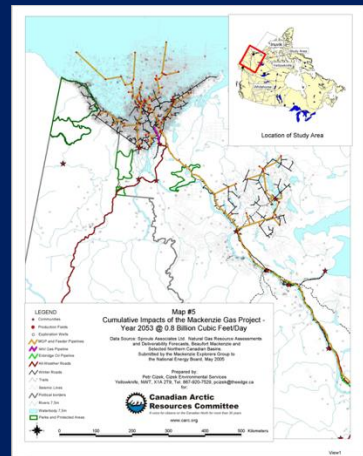
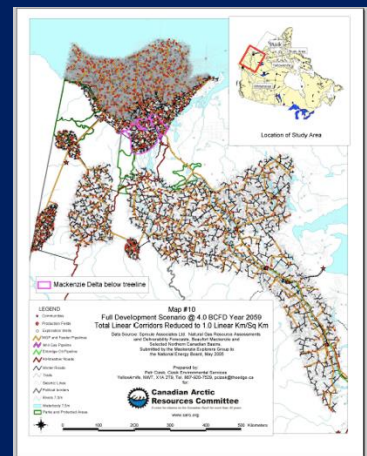
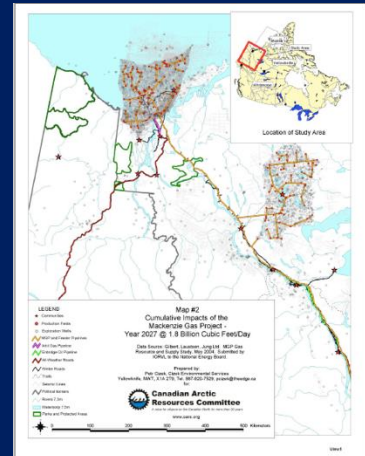
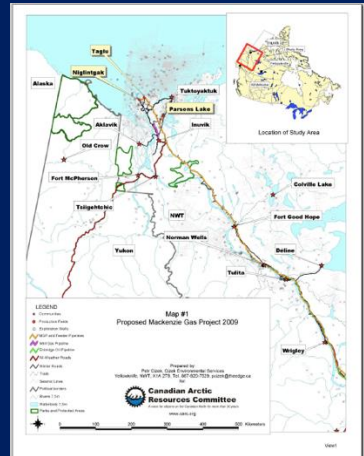


RAWG



# Scenarios of future development footprints

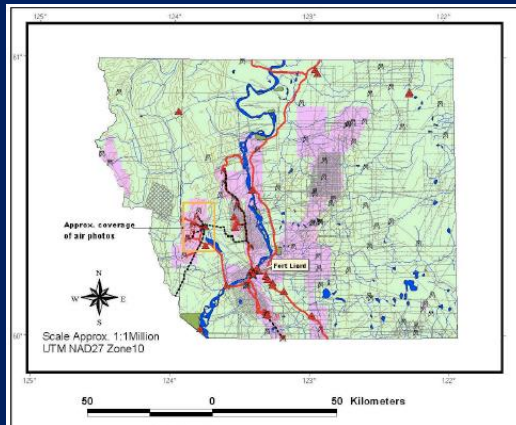
Petr Cizek's maps of different possible futures from natural gas extraction and pipelines in the Mackenzie Valley, NWT



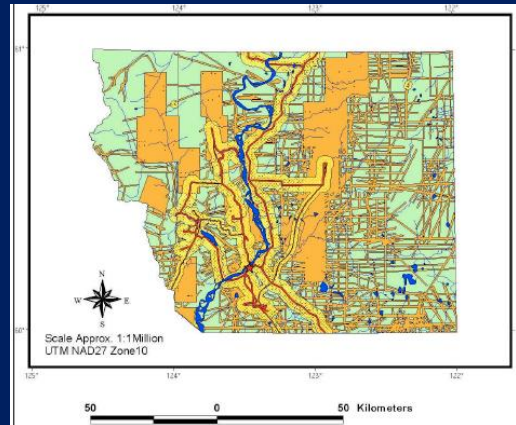
Petr Cizek, Canadian Arctic Resources Committee, submission to the Mackenzie Gas Project Joint Review Panel

# Maps of development footprints plus associated disturbance of large mammals, birds, plants, food chains, etc.

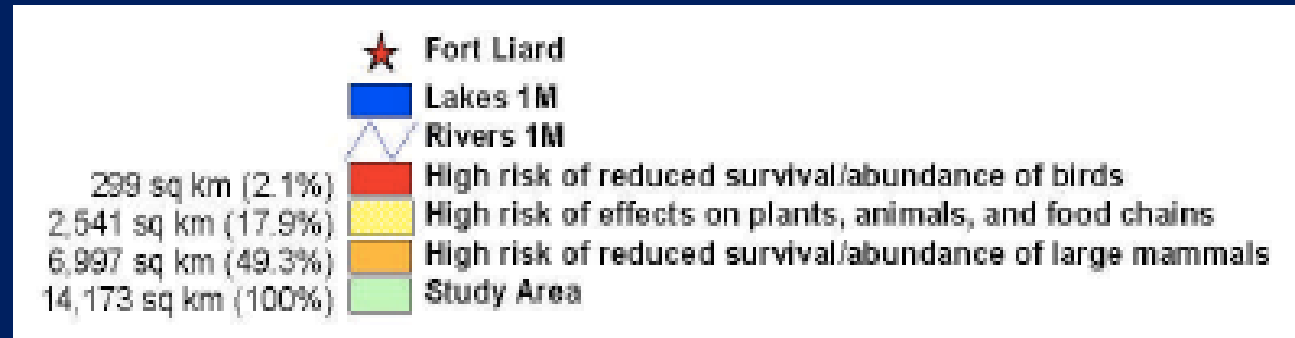
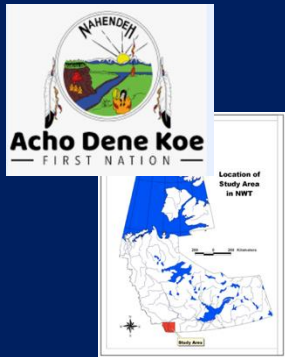
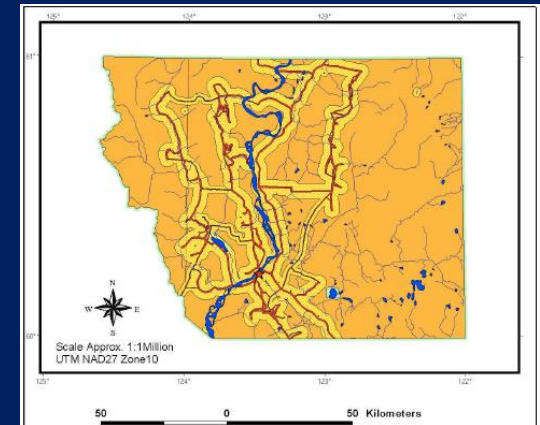
2001



2010



2050

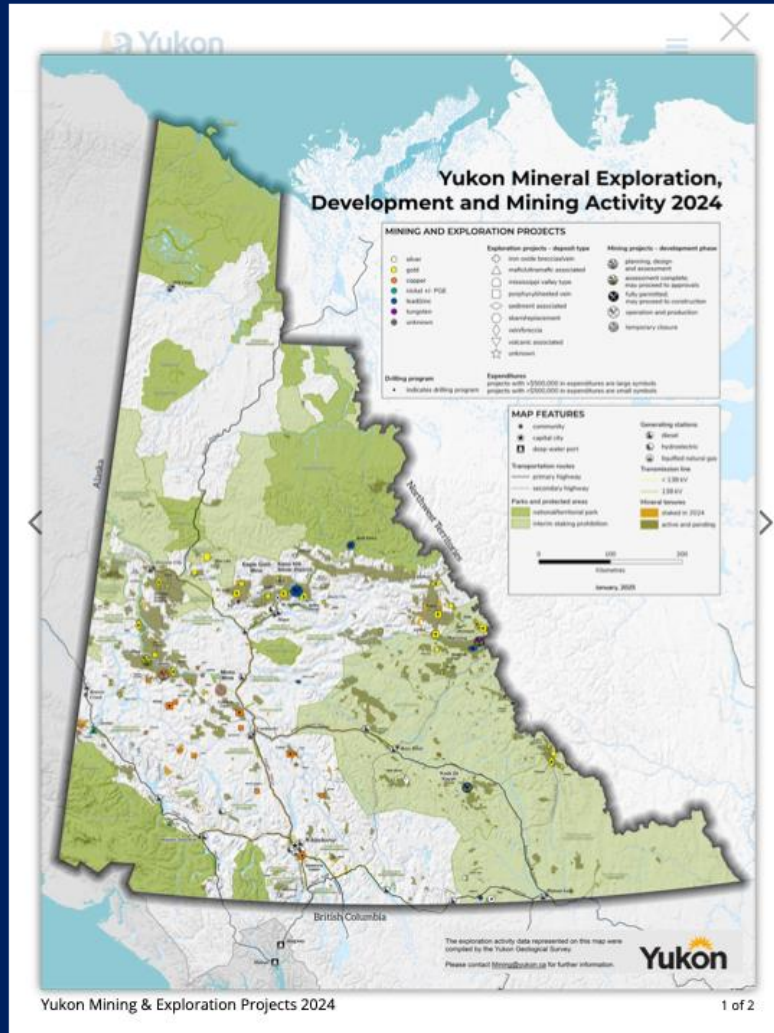


Petr Cizek, Fort Liard Oil/Gas Development, 2002

# Experience elsewhere: Yukon

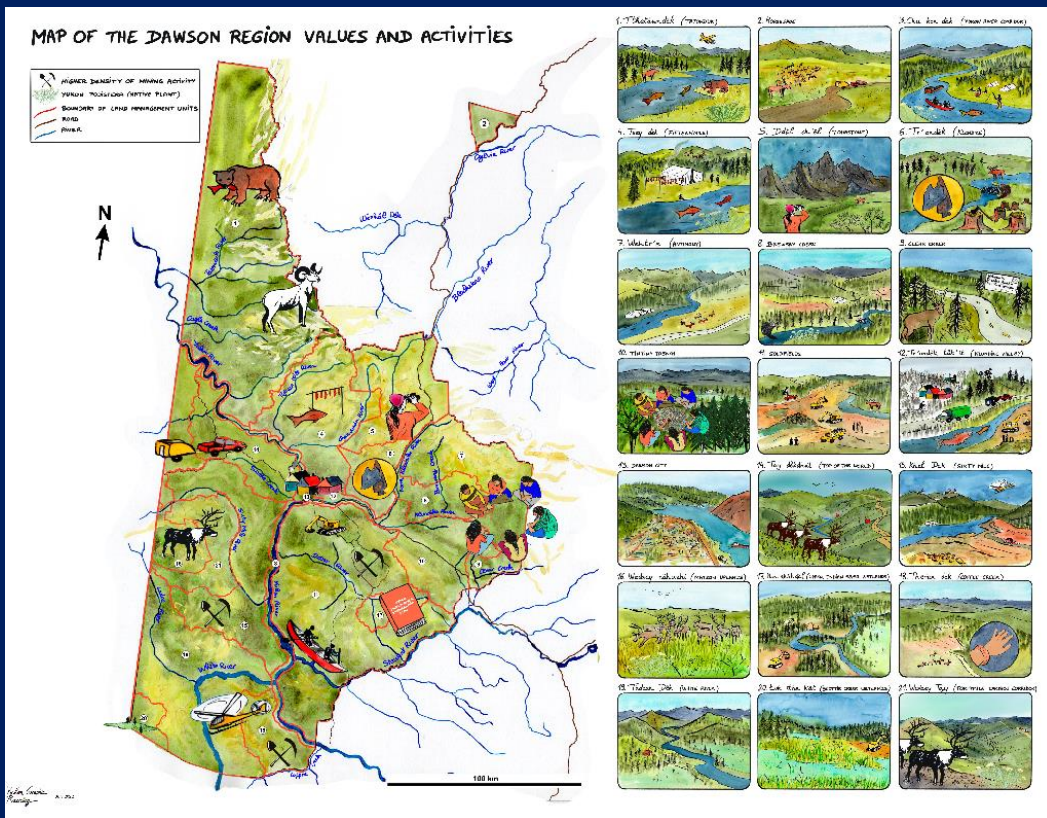
Map | Yukon Chamber of Mines

<https://www.yukon.ca/en>



- northern jurisdiction with mining experience since 1898 and many hard-won lessons
- considerable activity over more than a century, few operating mines now
- regional planning now evaluating extractive development futures

# Experience elsewhere: recommended Dawson Regional Plan



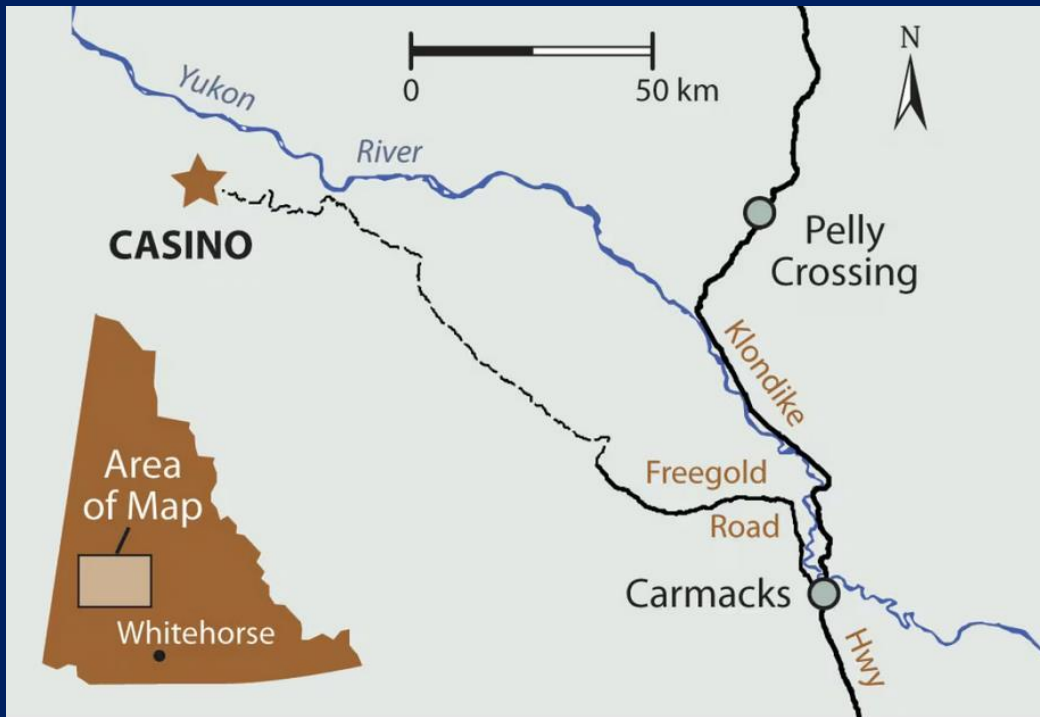
- region of the Klondike Gold Rush 1898-99
- placer mining continues (more or less destructively) hardrock mining on and off for decades
- recent planning with major Indigenous role in co-governance
- included depictions of valued activities

<https://dawson.planyukon.ca/>





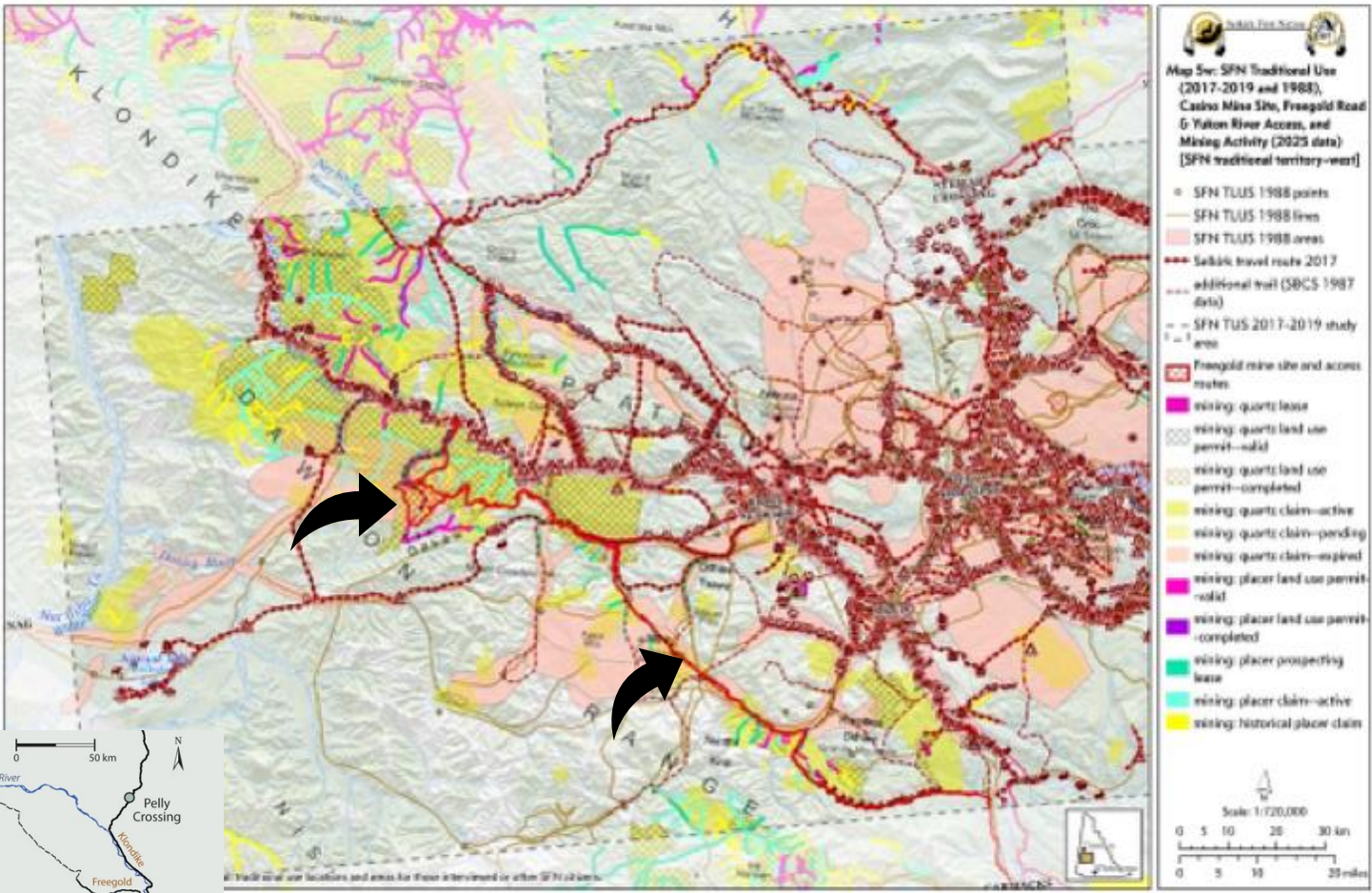
# Selkirk FN (Pelly Crossing) and the Casino Gold project



Casino mining.com

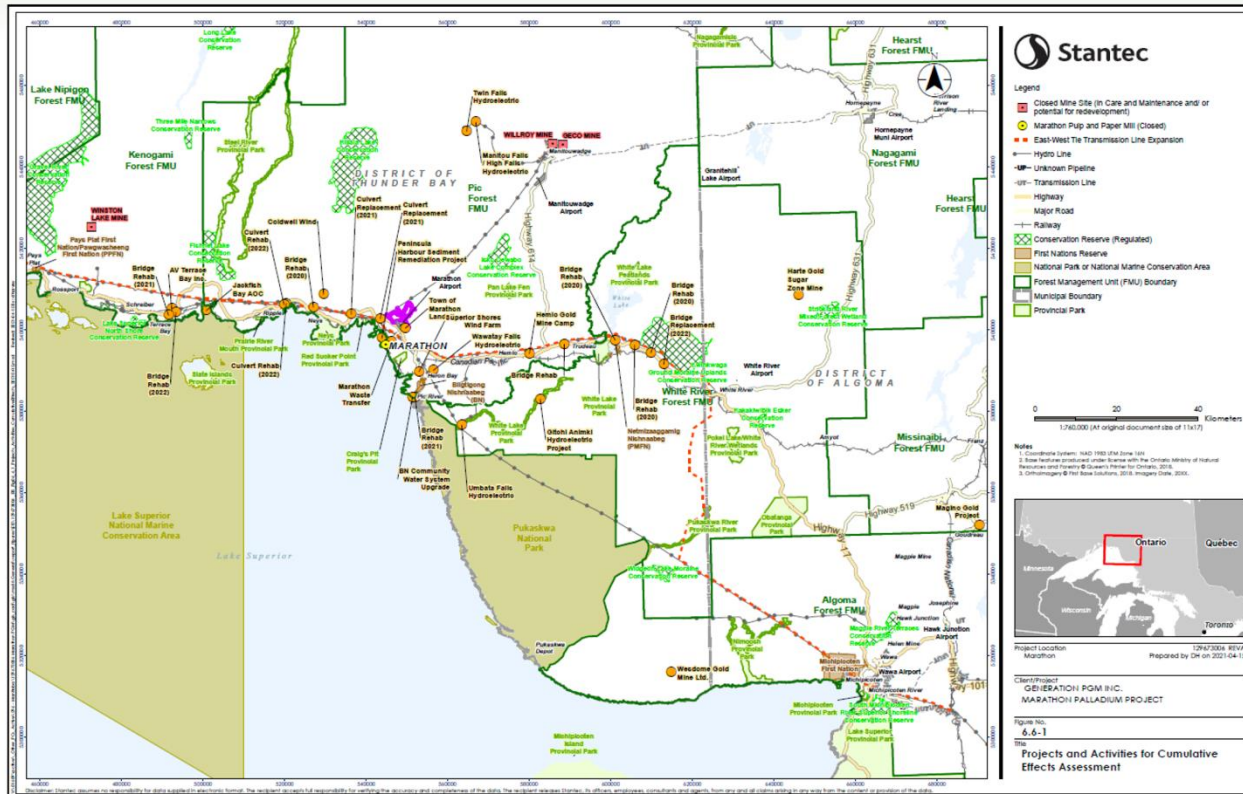
- massive proposed mine in traditional territories
- under Yukon process panel review
- decades of mining in area
- last mine (Minto) closed and was abandoned in 2023

# Selkirk FN Casino Gold: project overlaps with other mining & traditional land use



# Depictions of mines and other land uses: Marathon mine

## Cumulative Effects: Other Physical Activities **GENERATIONPGM**



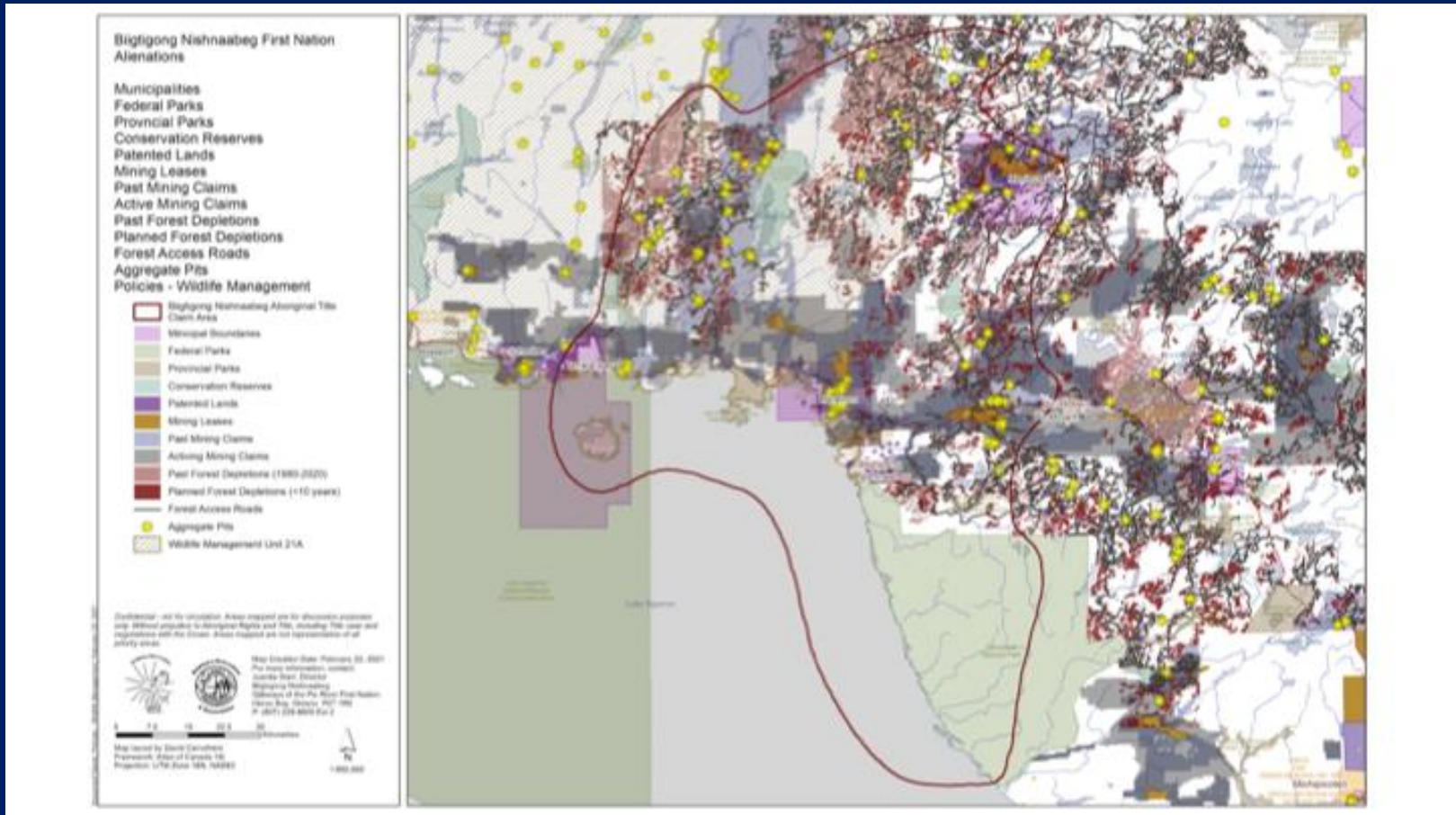
Source: CIAR #727 Figure 6.6-1

22

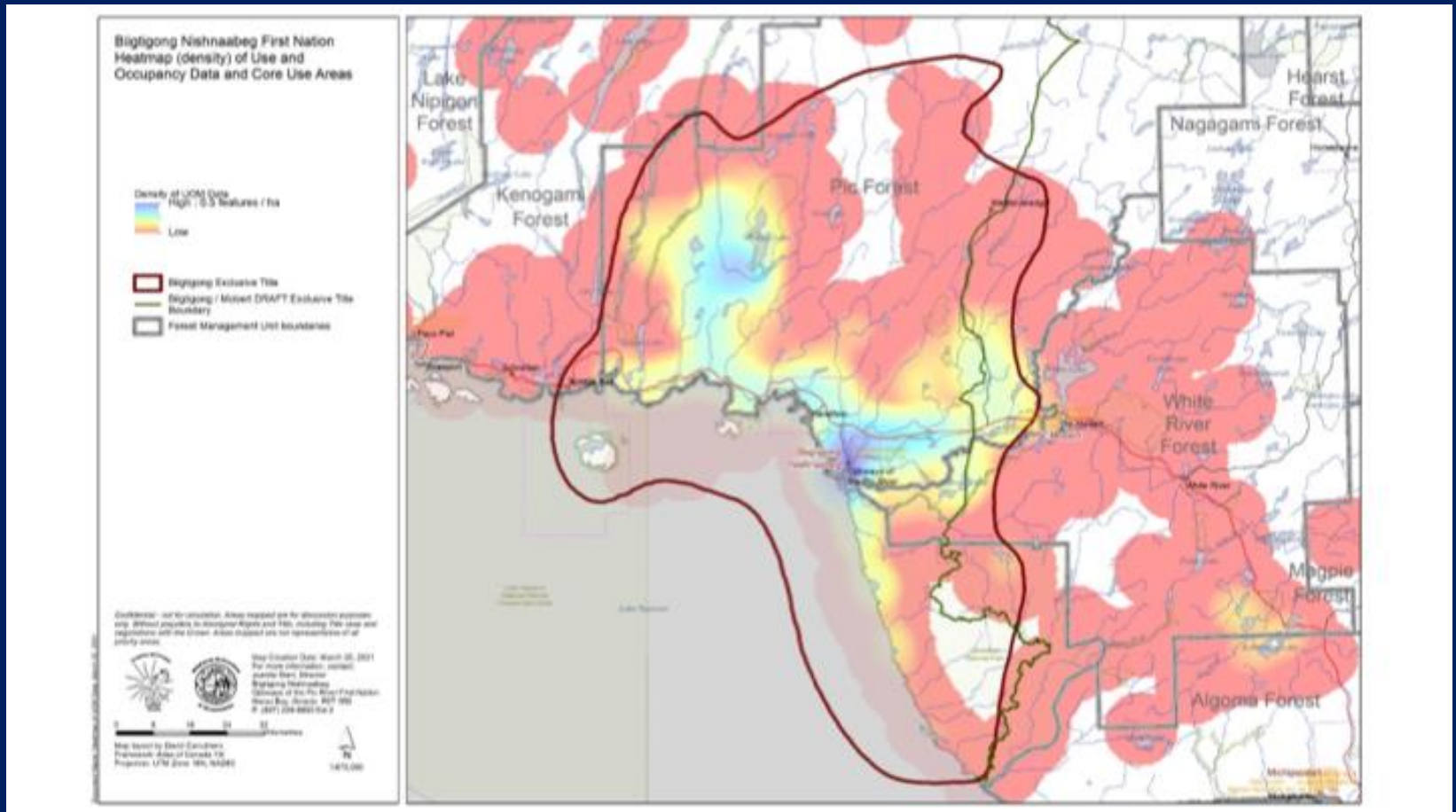
Generation  
PGM



# Depictions of mines and other land uses: Marathon mine

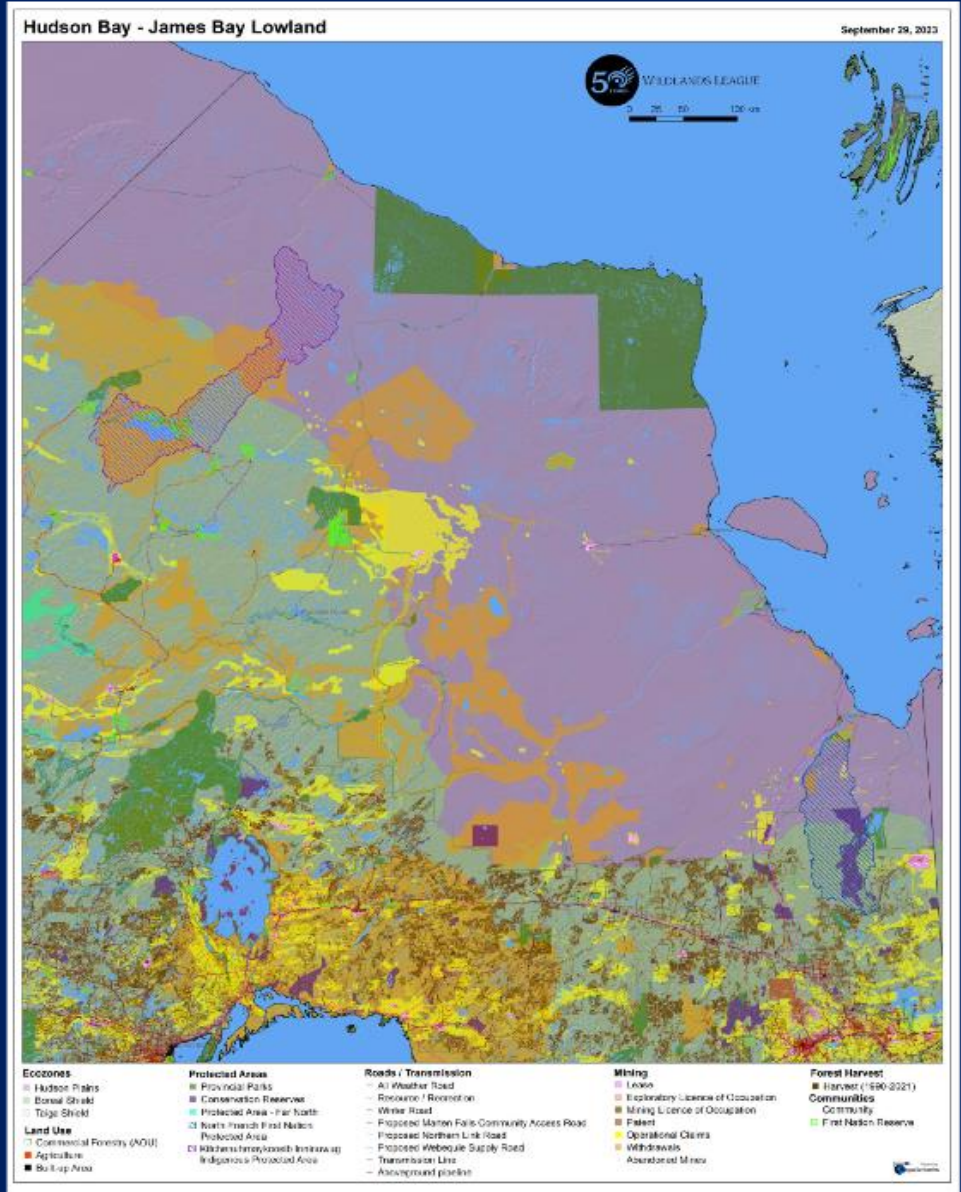


# Depictions of mines and other land uses: Marathon mine



Harvester Homeland Use Heatmap

GenerationPGM



# Northern Ontario industrial activities preceding RoF development

# Mining claims in the RoF area

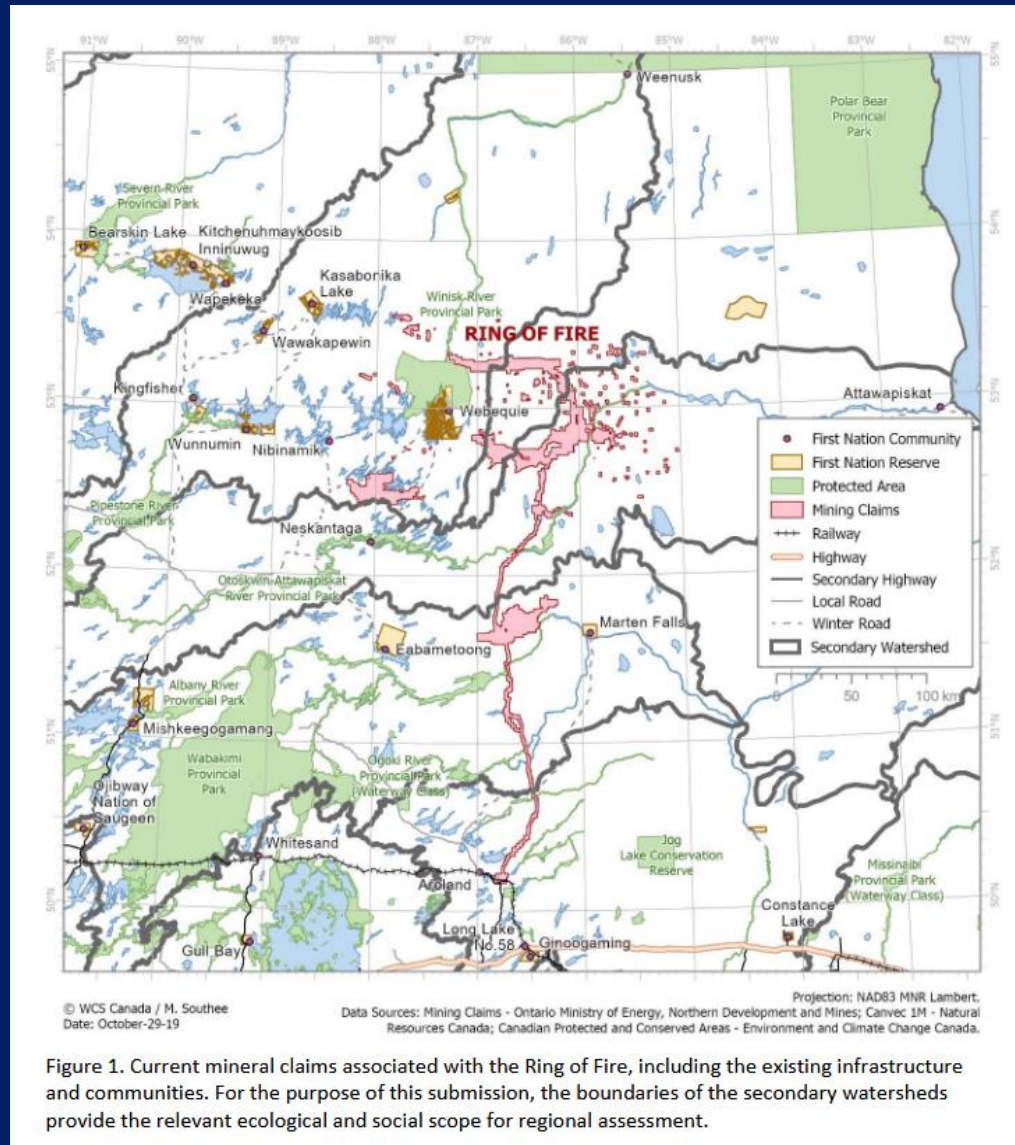


Figure 1. Current mineral claims associated with the Ring of Fire, including the existing infrastructure and communities. For the purpose of this submission, the boundaries of the secondary watersheds provide the relevant ecological and social scope for regional assessment.